



## MindTouch-Recommended Method of Installing MySQL Server in Windows

Applies to	MindTouch 8.08 or later	License	All versions
Operating System	Windows	Documentation Types	Setup
Community			

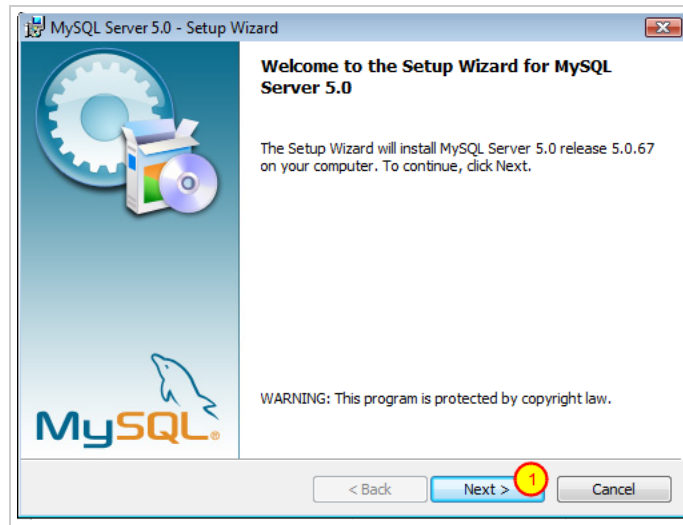
### Table of Contents

1. MindTouch Recommended Method of Installing MySQL Server in Windows
  - 1.1. Start the Installer
  - 1.2. Select Type
  - 1.3. Start the Installation
  - 1.4. Start the Configuration
  - 1.5. Finish the Installation Wizard and Start the Configuration Wizard
  - 1.6. Begin the Configuration Wizard
2. Select Configuration Type
  - 2.1. Select Machine Type
  - 2.2. Select Database Type
  - 2.3. Confirm InnoDB Tablespace Settings
  - 2.4. Select Concurrent Connections Settings
  - 2.5. Select Networking Options
  - 2.6. Select Server Default Character Set
  - 2.7. Select Windows Options
  - 2.8. Select Security Options
  - 2.9. Execute the Configuration Wizard
  - 2.10. Complete the Configuration.

## MindTouch Recommended Method of Installing MySQL Server in Windows

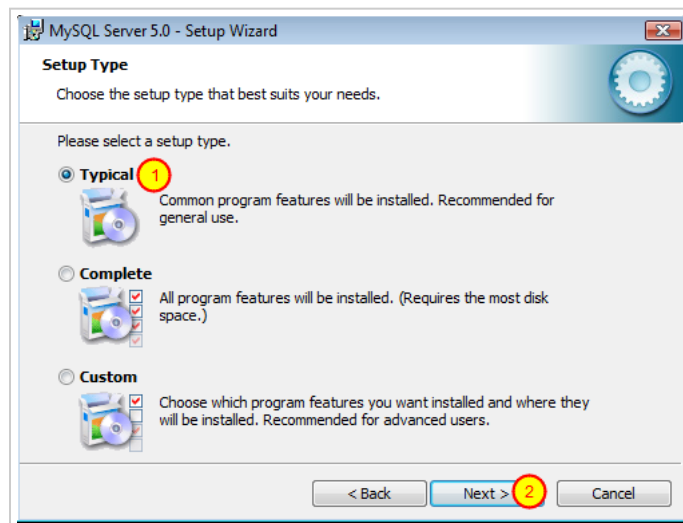
Note that MySQL can be downloaded from the [MySQL Site](#).

## Start the Installer



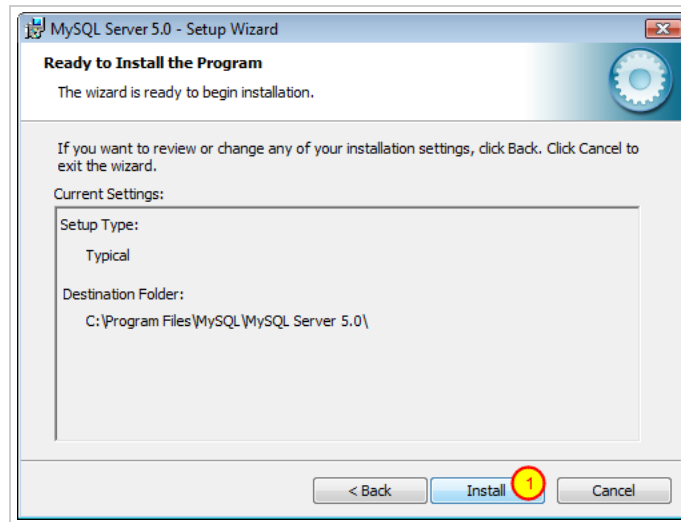
1. Click **Next**.

## Select Type



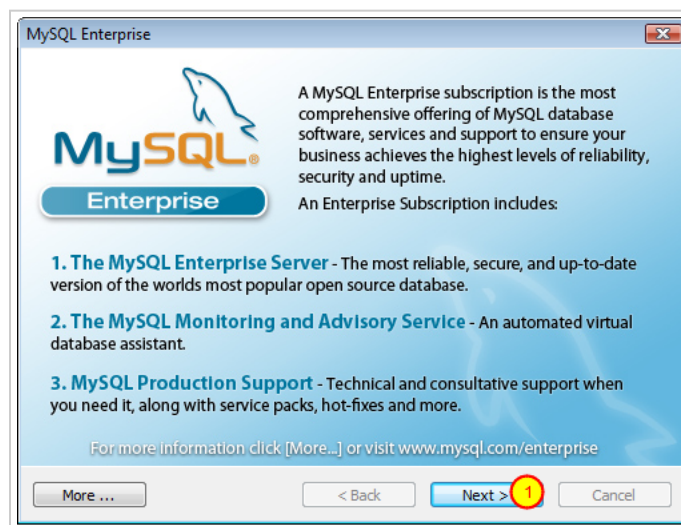
1. Make sure **Typical** is selected.
2. Click **Next**.

## Start the Installation



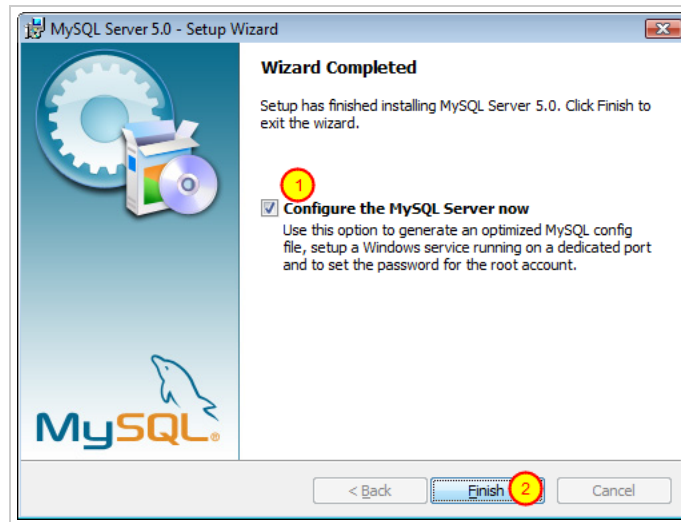
1. Click **Install**.

## Start the Configuration



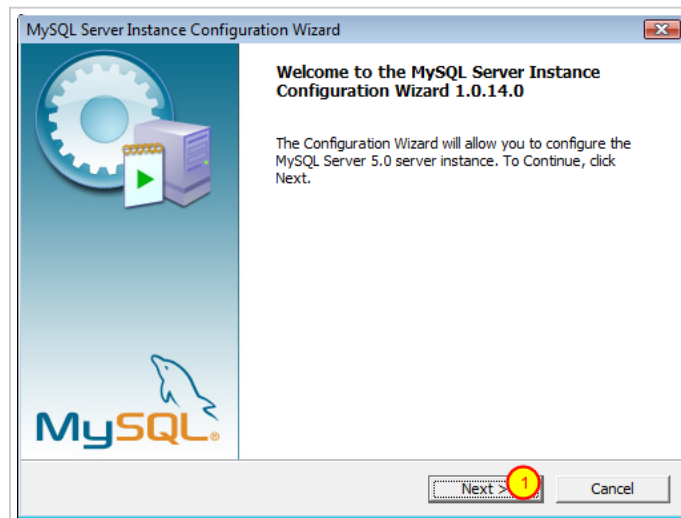
1. Click **Next** twice to scroll through the splash screens.

## Finish the Installation Wizard and Start the Configuration Wizard



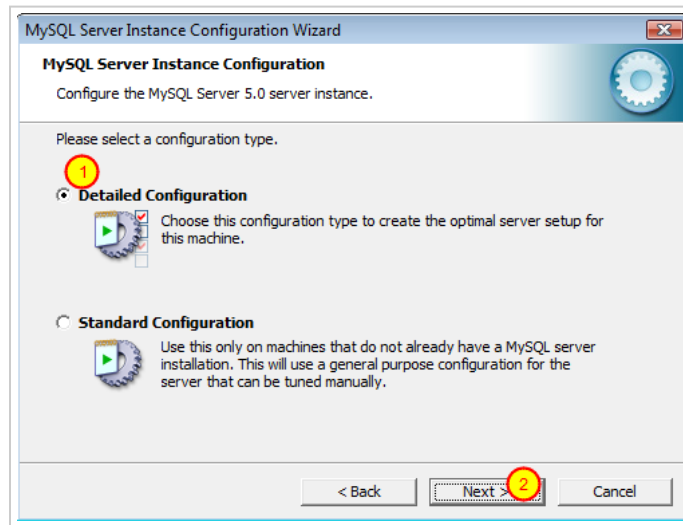
1. Make sure the box next to **Configure the MySQL Server now** is checked.
2. Click **Finish**.

## Begin the Configuration Wizard



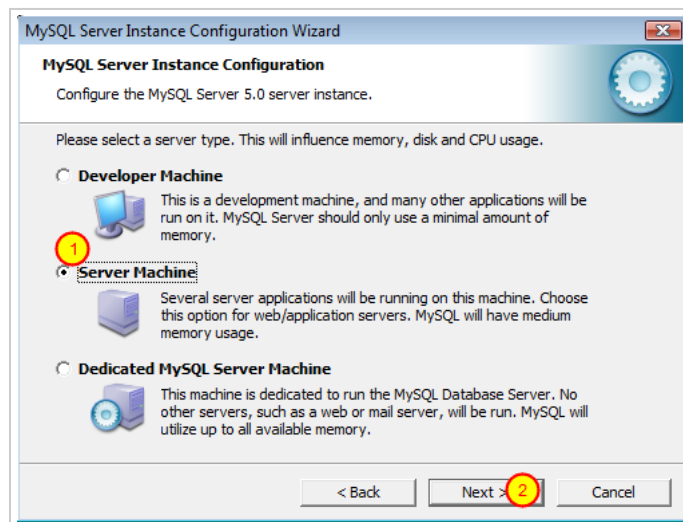
1. Click **Next**.

# Select Configuration Type



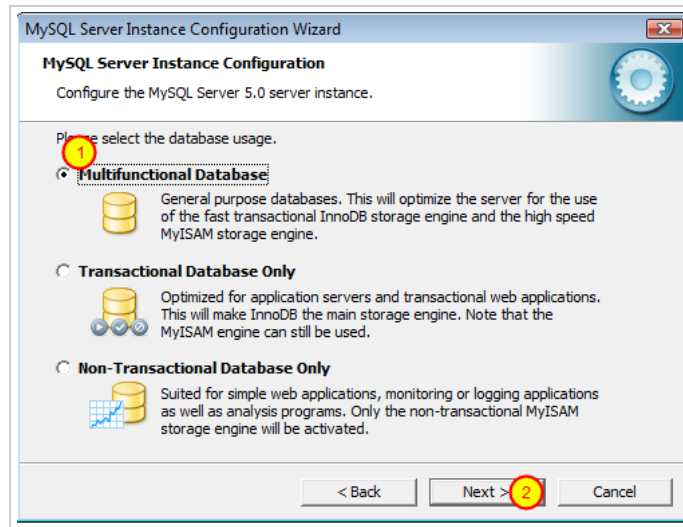
1. Make sure the radio button next to **Detailed Configuration** is selected.
2. Click **Next**.

## Select Machine Type



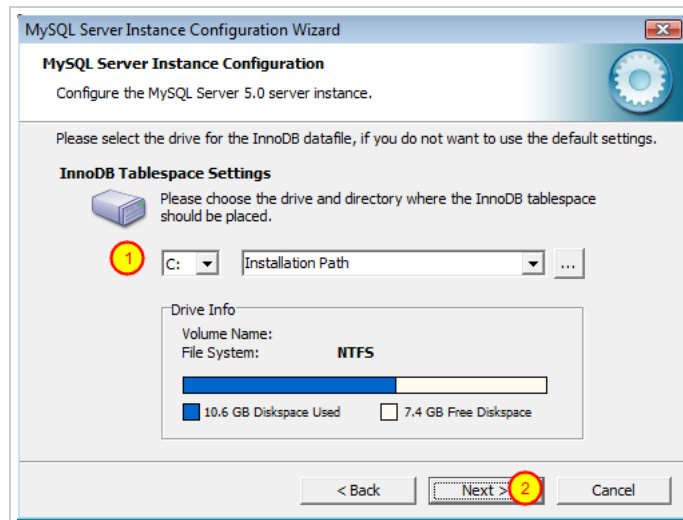
1. Click the radio button next to **Server Machine**.
2. Click **Next**.

## Select Database Type



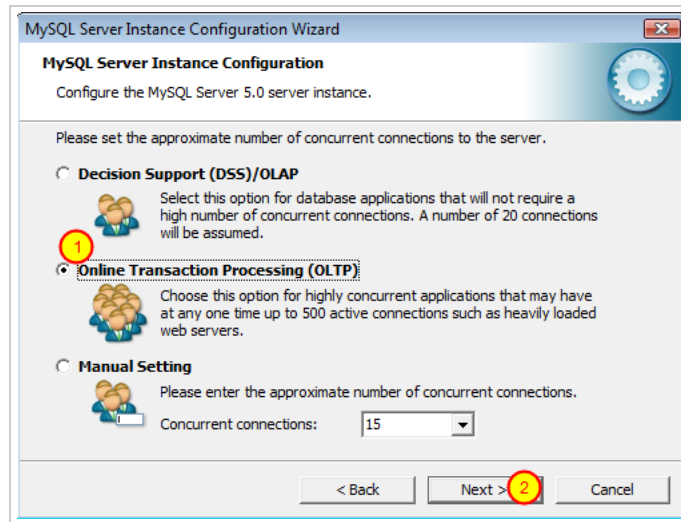
1. Make sure the radio button next to **Multifunctional Database** is selected.
2. Click **Next**.

## Confirm InnoDB Tablespace Settings



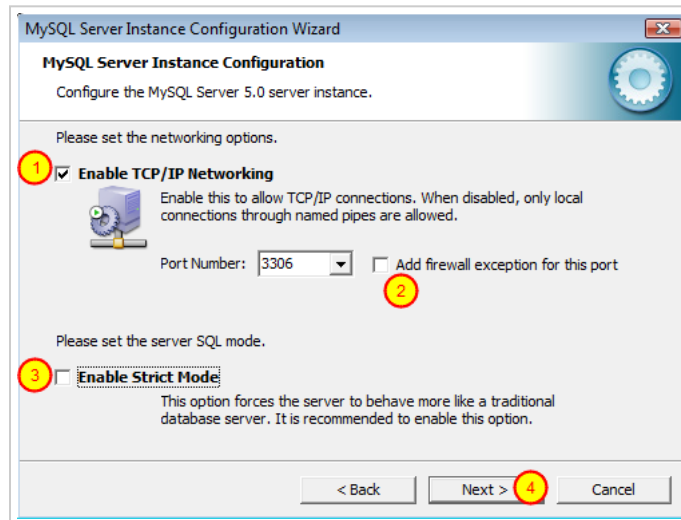
1. Review the tablespace settings. For most installations, the default settings are fine.
2. Click **Next**.

## Select Concurrent Connections Settings



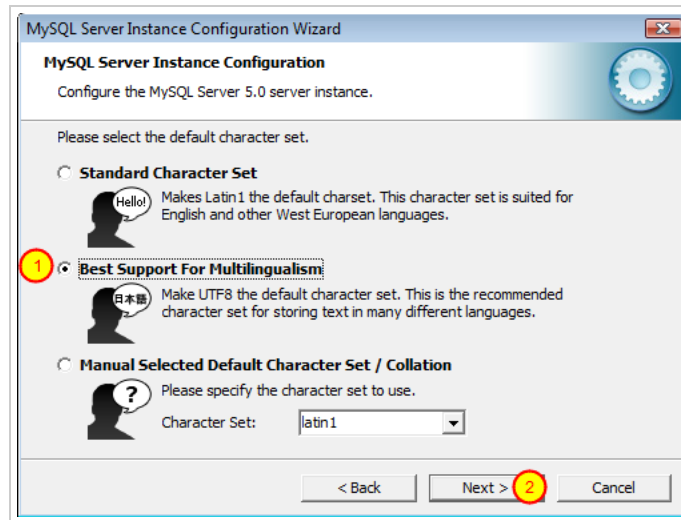
1. Select the radio button next to **Online Transaction Processing (OLTP)**.
2. Click **Next**.

## Select Networking Options



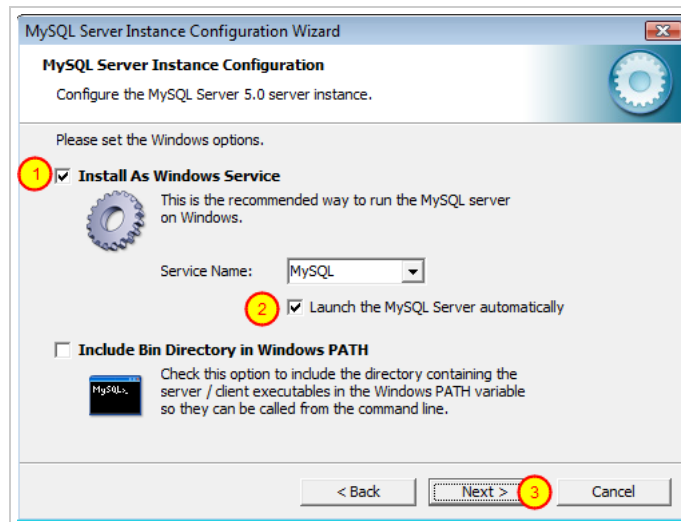
1. Make sure the checkbox next to **TCP/IP Networking** is selected.
2. If you have a need to access the MySQL Server remotely (from outside the server), check the box next to **Add firewall exception for this port**. If you are not sure, leave this box unchecked for security purposes.
3. Uncheck the box next to **Enable Strict Mode**. If this box remains checked, MindTouch will be unable to create the databases necessary.
4. Click **Next**.

## Select Server Default Character Set



1. Select the radio button next to **Best Support For Multilingualism**.
2. Click **Next**.

## Select Windows Options



1. Make sure that the checkbox next to **Install As Windows Service** is checked.
2. Make sure that the checkbox next to **Launch the MySQL Server automatically** is checked.
3. Click **Next**.

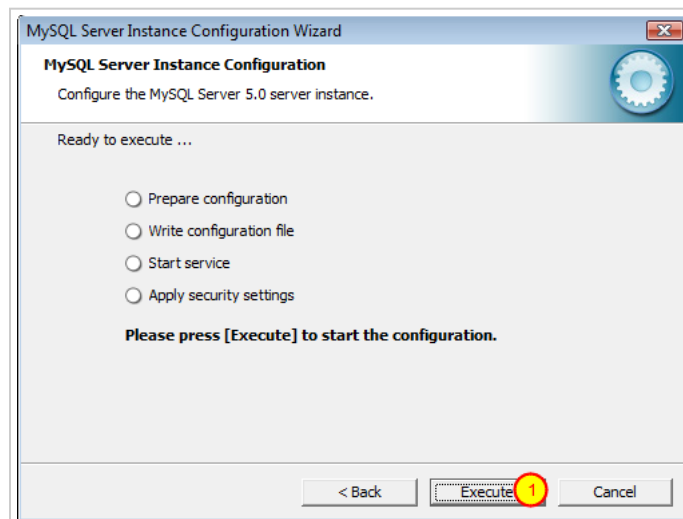


## Select Security Options



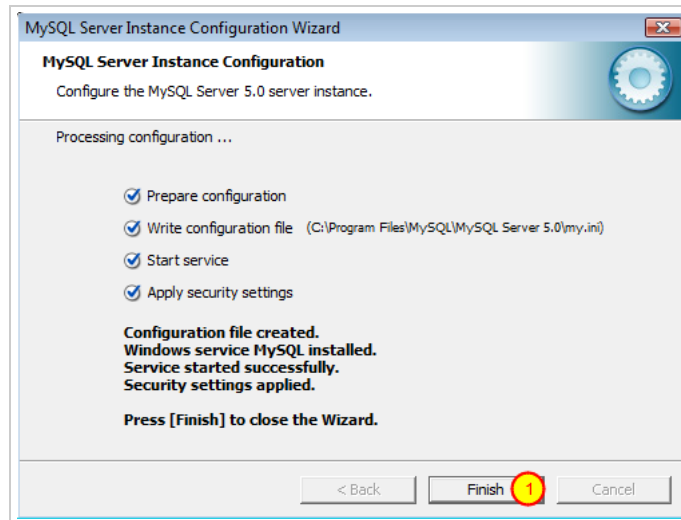
1. Make sure the checkbox next to **Modify Security Settings** is checked.
2. Enter a password that you will remember (required for a successful MindTouch installation).
3. Confirm the password.
4. If root access will be required from remote machines, select the checkbox next to **Enable root access from remote machines**. If you are unsure, it is recommended that you leave this box unchecked for security purposes.
5. Click Next.

## Execute the Configuration Wizard



1. Click **Execute**. The Configuration Wizard will then set up the server as per the configuration options.

## Complete the Configuration.



1. Click **Finish** to complete the installation.

Congratulations! Your MySQL Server is now installed and configured properly. You may now complete the MindTouch installation.

